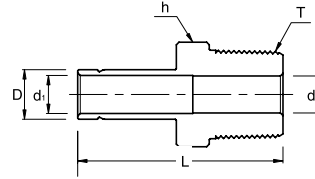
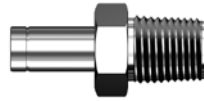


SMA
Male Adapter



Connects Fractional SUPERLOK® Port To Female NPT Thread

Part No.	Tube OD D (inch)	T* (NPT)	d (Min)	d1	Width Across Flat h (inch)	L
SMA - 2 - 2N	1/8	1/8	4.82	2.10	7/16	29.50
SMA - 2 - 4N	1/8	1/4	7.11	2.10	9/16	34.80
SMA - 3 - 2N	3/16	1/8	4.82	3.04	7/16	30.22
SMA - 3 - 4N	3/16	1/4	7.11	3.04	9/16	35.56
SMA - 4 - 2N	1/4	1/8	4.40	4.40	7/16	31.80
SMA - 4 - 4N	1/4	1/4	4.40	4.40	9/16	37.08
SMA - 4 - 6N	1/4	3/8	4.40	4.40	11/16	37.84
SMA - 4 - 8N	1/4	1/2	4.40	4.40	7/8	43.43
SMA - 5 - 2N	5/16	1/8	4.82	5.60	7/16	32.76
SMA - 5 - 4N	5/16	1/4	6.35	5.60	9/16	38.10
SMA - 6 - 2N	3/8	1/8	4.82	6.90	7/16	33.50
SMA - 6 - 4N	3/8	1/4	6.90	6.90	9/16	38.90
SMA - 6 - 6N	3/8	3/8	6.90	6.90	11/16	39.60
SMA - 6 - 8N	3/8	1/2	6.90	6.90	7/8	45.20
SMA - 8 - 4N	1/2	1/4	7.11	9.40	9/16	44.50
SMA - 8 - 6N	1/2	3/8	9.40	9.40	11/16	45.20
SMA - 8 - 8N	1/2	1/2	9.40	9.40	7/8	50.80
SMA - 10 - 6N	5/8	3/8	9.90	12.00	11/16	47.40
SMA - 10 - 8N	5/8	1/2	12.00	12.00	7/8	52.30
SMA - 10 - 12N	5/8	3/4	14.98	12.00	1-1/16	52.30
SMA - 12 - 8N	3/4	1/2	11.94	14.80	7/8	52.30
SMA - 12 - 12N	3/4	3/4	14.80	14.80	1-1/16	52.30
SMA - 12 - 16N	3/4	1	20.32	14.80	1-3/8	57.91
SMA - 14 - 12N	7/8	3/4	14.98	17.27	1-1/16	54.30
SMA - 16 - 12N	1	3/4	15.74	20.40	1-1/16	58.70
SMA - 16 - 16N	1	1	20.40	20.40	1-3/8	66.00

Connects Metric SUPERLOK® Port To Female NPT Thread

Part No.	Tube OD D (inch)	T* (NPT)	d (Min)	d1	Width Across Flat h (inch)	L
SMA - 6M - 2N	6	1/8	4.1	4.1	12	32.8
SMA - 6M - 4N	6	1/4	4.1	4.1	14	38.1
SMA - 8M - 4N	8	1/4	5.6	5.6	14	39.1
SMA - 10M - 4N	10	1/4	7.1	7.1	14	39.9
SMA - 10M - 6N	10	3/8	7.1	7.1	18	40.6
SMA - 10M - 8N	10	1/2	11.9	7.1	22	46.2
SMA - 12M - 4N	12	1/4	7.1	8.8	16	46.5
SMA - 12M - 8N	12	1/2	11.9	8.8	22	52.0
SMA - 18M - 12N	18	3/4	15.9	13.9	27	54.8

- Dimensions and Drawings are for reference only and are subject to change without prior notice.
- Unless otherwise specified, all dimensions are in millimeters.
- Sizes, pressure classes, and end connections not listed are available upon request.
- Dimensions shown with SUPERLOK nuts finger-tight, where applicable.