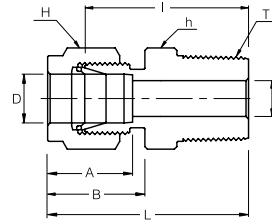
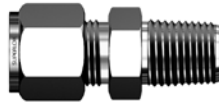


# SMC

## Male Connector



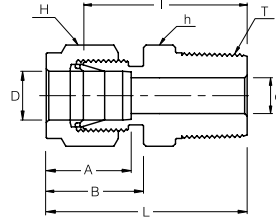
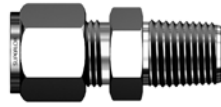
### Connects Fractional Tubes To Female NPT Thread

Part No.	Tube OD D (inch)	T (NPT)	d Min	Width Across Flat		A	B	I	L
				h (inch)	H (inch)				
SMC - 1 - 1N	1/16	1/16	1.27	5/16	5/16	8.63	10.92	20.00	23.83
SMC - 1 - 2N	1/16	1/8	1.27	7/16	7/16	8.63	10.92	22.35	26.23
SMC - 2 - 2N	1/8	1/8	2.28	7/16	7/16	12.70	15.24	23.87	30.48
SMC - 2 - 4N	1/8	1/4	2.28	9/16	7/16	12.70	15.24	28.95	35.56
SMC - 2 - 6N	1/8	3/8	2.28	11/16	7/16	12.70	15.24	29.21	35.81
SMC - 2 - 8N	1/8	1/2	2.28	7/8	7/16	12.70	15.24	35.56	42.16
SMC - 3 - 2N	3/16	1/8	3.04	7/16	1/2	13.71	16.00	24.63	31.24
SMC - 3 - 4N	3/16	1/4	3.04	9/16	1/2	13.71	16.00	29.71	36.32
SMC - 4 - 2N	1/4	1/8	4.82	1/2	9/16	15.24	17.78	25.40	32.76
SMC - 4 - 4N	1/4	1/4	4.82	9/16	9/16	15.24	17.78	30.48	37.84
SMC - 4 - 6N	1/4	3/8	4.82	11/16	9/16	15.24	17.78	30.98	38.35
SMC - 4 - 8N	1/4	1/2	4.82	7/8	9/16	15.24	17.78	37.33	44.70
SMC - 4 - 12N	1/4	3/4	4.82	1-1/16	9/16	15.24	17.78	38.86	46.22
SMC - 5 - 2N	5/16	1/8	4.82	9/16	5/8	16.25	18.54	26.67	34.03
SMC - 5 - 4N	5/16	1/4	6.35	9/16	5/8	16.25	18.54	31.24	38.60
SMC - 5 - 6N	5/16	3/8	6.35	11/16	5/8	16.25	18.54	31.75	39.11
SMC - 6 - 2N	3/8	1/8	4.82	5/8	11/16	16.76	19.30	27.94	35.30
SMC - 6 - 4N	3/8	1/4	7.11	5/8	11/16	16.76	19.30	32.51	39.87
SMC - 6 - 6N	3/8	3/8	7.11	11/16	11/16	16.76	19.30	32.51	39.87
SMC - 6 - 8N	3/8	1/2	7.11	7/8	11/16	16.76	19.30	38.86	46.22
SMC - 6 - 12N	3/8	3/4	7.11	1-1/16	11/16	16.76	19.30	40.38	47.75
SMC - 8 - 2N	1/2	1/8	4.82	13/16	7/8	22.86	21.84	28.70	38.86
SMC - 8 - 4N	1/2	1/4	7.11	13/16	7/8	22.86	21.84	33.27	43.43
SMC - 8 - 6N	1/2	3/8	9.65	13/16	7/8	22.86	21.84	33.27	43.43
SMC - 8 - 8N	1/2	1/2	10.41	7/8	7/8	22.86	21.84	38.86	49.02
SMC - 8 - 12N	1/2	3/4	10.41	1-1/16	7/8	22.86	21.84	40.38	50.54
SMC - 8 - 16N	1/2	1	10.41	1-3/8	7/8	22.86	21.84	46.99	57.15
SMC - 10 - 6N	5/8	3/8	9.65	15/16	1	24.38	21.84	34.03	44.19
SMC - 10 - 8N	5/8	1/2	11.93	15/16	1	24.38	21.84	38.86	49.02
SMC - 10 - 12N	5/8	3/4	12.70	1-1/16	1	24.38	21.84	40.38	50.54
SMC - 12 - 8N	3/4	1/2	11.93	1-1/16	1-1/8	24.38	21.84	40.38	50.54
SMC - 12 - 12N	3/4	3/4	15.74	1-1/16	1-1/8	24.38	21.84	40.38	50.54
SMC - 12 - 16N	3/4	1	15.74	1-3/8	1-1/8	24.38	21.84	46.99	57.15
SMC - 14 - 12N	7/8	3/4	15.74	1-3/16	1-1/4	25.90	21.84	40.38	50.54
SMC - 14 - 16N	7/8	1	18.28	1-3/8	1-1/4	25.90	21.84	46.99	57.15
SMC - 16 - 8N	1	1/2	11.93	1-3/8	1-1/2	31.24	26.41	45.21	57.40
SMC - 16 - 12N	1	3/4	15.74	1-3/8	1-1/2	31.24	26.41	45.21	57.40
SMC - 16 - 16N	1	1	22.35	1-3/8	1-1/2	31.24	26.41	50.03	62.23
SMC - 20 - 16N	1-1/4	1	22.35	1-3/4	1-7/8	41.15	38.86	55.12	77.22
SMC - 20 - 20N	1-1/4	1-1/4	27.69	1-3/4	1-7/8	41.15	38.86	55.12	77.22
SMC - 24 - 24N	1-1/2	1-1/2	34.04	2-1/8	2-1/4	50.04	45.21	61.72	88.90
SMC - 32 - 32N	2	2	45.97	2-3/4	3	67.56	62.74	76.20	113.54

- Dimensions and Drawings are for reference only and are subject to change without prior notice.  
 - Unless otherwise specified, all dimensions are in millimeters.  
 - Sizes, pressure classes, and end connections not listed are available upon request.  
 - Dimensions shown with SUPERLOK nuts finger-tight, where applicable.

# SMC

## Male Connector



### Connects Fractional Tube To Female ISO Tapered Thread

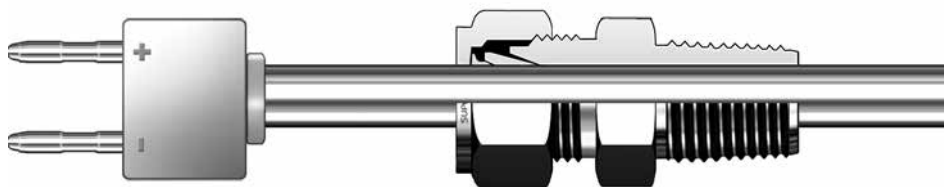
Part No.	Tube OD D (inch)	T R (PT)	d Min	Width Across Flat		A	B	I	L
				h (inch)	H (inch)				
SMC - 2 - 2R	1/8	1/8	2.28	7/16	7/16	12.70	15.24	23.87	30.48
SMC - 2 - 4R	1/8	1/4	2.28	9/16	7/16	12.70	15.24	28.95	35.56
SMC - 4 - 2R	1/4	1/8	4.82	1/2	9/16	15.24	17.78	25.40	32.76
SMC - 4 - 4R	1/4	1/4	4.82	9/16	9/16	15.24	17.78	30.48	37.84
SMC - 4 - 6R	1/4	3/8	4.82	11/16	9/16	15.24	17.78	30.98	38.35
SMC - 4 - 8R	1/4	1/2	4.82	7/8	9/16	15.24	17.78	37.33	44.70
SMC - 5 - 2R	5/16	1/8	4.82	9/16	5/8	16.25	18.54	26.67	34.03
SMC - 5 - 4R	5/16	1/4	6.35	9/16	5/8	16.25	18.54	31.24	38.60
SMC - 6 - 2R	3/8	1/8	4.82	5/8	11/16	16.76	19.30	27.94	35.30
SMC - 6 - 4R	3/8	1/4	7.11	5/8	11/16	16.76	19.30	32.51	39.87
SMC - 6 - 6R	3/8	3/8	7.11	11/16	11/16	16.76	19.30	32.51	39.87
SMC - 6 - 8R	3/8	1/2	7.11	7/8	11/16	16.76	19.30	38.86	46.22
SMC - 8 - 4R	1/2	1/4	7.11	13/16	7/8	22.86	21.84	33.27	43.43
SMC - 8 - 6R	1/2	3/8	9.65	13/16	7/8	22.86	21.84	33.27	43.43
SMC - 8 - 8R	1/2	1/2	10.41	7/8	7/8	22.86	21.84	38.86	49.02
SMC - 8 - 12R	1/2	3/4	10.41	1-1/16	7/8	22.86	21.84	40.38	50.54
SMC - 12 - 12R	3/4	3/4	15.74	1-1/16	1-1/8	24.38	21.84	40.38	50.54
SMC - 16 - 16R	1	1	22.35	1-3/8	1-1/2	31.24	26.41	50.03	62.23

### Bored - Through Fittings for Thermocouples

SUPERLOK Bored-Through MALE CONNECTORS accommodate thermocouples or dip tubes.

To order suffix “-TM” to the Size designator. (Example : SU-8-TM, SMC-8-8N-TM-B)

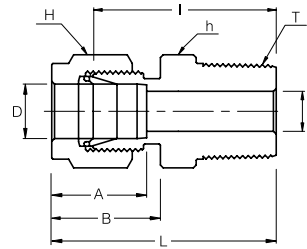
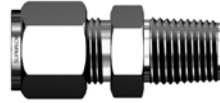
Note - The root diameter of the pipe thread end of male connectors makes it impractical to bore through all male connectors.



- Dimensions and Drawings are for reference only and are subject to change without prior notice.
- Unless otherwise specified, all dimensions are in millimeters.
- Sizes, pressure classes, and end connections not listed are available upon request.
- Dimensions shown with SUPERLOK nuts finger-tight, where applicable.

**SMC**

## Male Connector

**Connects Metric Tube To Female NPT Thread**

Part No.	Tube OD D	T (NPT)	d Min	Width Across Flat		A	B	I	L
				h	H				
SMC - 2M - 2N	2	1/8	1.7	12	12	12.9	15.3	23.9	30.5
SMC - 3M - 2N	3	1/8	2.4	12	12	12.9	15.3	23.9	30.5
SMC - 3M - 4N	3	1/4	2.4	14	12	12.9	15.3	29.0	35.6
SMC - 4M - 2N	4	1/8	2.4	12	12	13.7	16.1	24.6	31.2
SMC - 4M - 4N	4	1/4	2.4	14	12	13.7	16.1	29.7	36.3
SMC - 6M - 2N	6	1/8	4.8	14	14	15.3	17.7	25.4	32.8
SMC - 6M - 4N	6	1/4	4.8	14	14	15.3	17.7	30.5	37.9
SMC - 6M - 6N	6	3/8	4.8	18	14	15.3	17.7	31.0	38.4
SMC - 6M - 8N	6	1/2	4.8	22	14	15.3	17.7	37.3	44.7
SMC - 8M - 2N	8	1/8	4.8	15	16	16.2	18.6	26.7	34.2
SMC - 8M - 4N	8	1/4	6.4	15	16	16.2	18.6	31.2	38.7
SMC - 8M - 6N	8	3/8	6.4	18	16	16.2	18.6	31.8	39.3
SMC - 8M - 8N	8	1/2	6.4	22	16	16.2	18.6	38.1	45.6
SMC - 10M - 2N	10	1/8	4.8	18	19	17.2	19.5	28.7	36.3
SMC - 10M - 4N	10	1/4	7.9	18	19	17.2	19.5	33.3	40.9
SMC - 10M - 6N	10	3/8	7.9	18	19	17.2	19.5	33.3	40.9
SMC - 10M - 8N	10	1/2	7.9	22	19	17.2	19.5	38.9	46.5
SMC - 12M - 2N	12	1/8	4.8	22	22	22.8	22.0	28.7	38.8
SMC - 12M - 4N	12	1/4	7.1	22	22	22.8	22.0	33.3	43.4
SMC - 12M - 6N	12	3/8	9.5	22	22	22.8	22.0	33.3	43.4
SMC - 12M - 8N	12	1/2	9.5	22	22	22.8	22.0	38.9	49.0
SMC - 12M - 12N	12	3/4	9.5	27	22	22.8	22.0	40.4	50.5
SMC - 14M - 4N	14	1/4	7.1	24	25	24.4	22.0	34.0	44.1
SMC - 14M - 6N	14	3/8	9.5	24	25	24.4	22.0	34.0	44.1
SMC - 14M - 8N	14	1/2	11.1	24	25	24.4	22.0	38.9	49.0
SMC - 16M - 6N	16	3/8	9.5	24	25	24.4	22.0	34.0	44.1
SMC - 16M - 8N	16	1/2	11.9	24	25	24.4	22.0	38.9	49.0
SMC - 16M - 12N	16	3/4	12.7	27	25	24.4	22.0	40.4	50.5
SMC - 18M - 8N	18	1/2	11.9	27	30	24.4	22.0	40.4	50.5
SMC - 18M - 12N	18	3/4	15.1	27	30	24.4	22.0	40.4	50.5
SMC - 20M - 8N	20	1/2	11.9	30	32	26.0	22.0	42.2	52.3
SMC - 20M - 12N	20	3/4	15.9	30	32	26.0	22.0	42.2	52.3
SMC - 22M - 12N	22	3/4	15.9	30	32	26.0	22.0	42.2	52.3
SMC - 22M - 16N	22	1	18.3	35	32	26.0	22.0	47.0	57.1
SMC - 25M - 12N	25	3/4	15.9	35	38	31.3	26.5	45.2	57.5
SMC - 25M - 16N	25	1	21.8	35	38	31.3	26.5	50.0	62.3
SMC - 28M - 16N	28	1	21.8	41	46	36.6	36.6	51.6	72.4
SMC - 28M - 20N	28	1-1/4	21.8	44.4	46	36.6	36.6	52.3	73.1
SMC - 30M - 20N	30	1-1/4	26.2	46	50	39.6	39.2	55.6	77.2
SMC - 32M - 20N	32	1-1/4	28.6	46	50	42.0	41.6	56.6	79.6
SMC - 38M - 24N	38	1-1/2	33.7	55	60	49.4	47.9	64.0	91.6

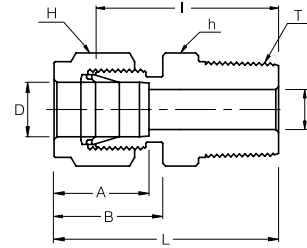
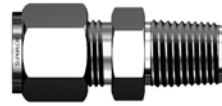
- Dimensions and Drawings are for reference only and are subject to change without prior notice.

- Unless otherwise specified, all dimensions are in millimeters.

- Sizes, pressure classes, and end connections not listed are available upon request.

- Dimensions shown with SUPERLOK nuts finger-tight, where applicable.

**SMC**  
Male Connector



**Connects Metric Tube To Female ISO Tapered Thread**

Part No.	Tube OD D	T R (PT)	d Min	Width Across Flat		A	B	I	L
				h	H				
SMC - 2M - 2R	2	1/8	1.7	12	12	12.9	15.3	23.9	30.5
SMC - 3M - 2R	3	1/8	2.4	12	12	12.9	15.3	23.9	30.5
SMC - 3M - 4R	3	1/4	2.4	14	12	12.9	15.3	29.0	35.6
SMC - 4M - 2R	4	1/8	2.4	12	12	13.7	16.1	24.6	31.2
SMC - 4M - 4R	4	1/4	2.4	14	12	13.7	16.1	29.7	36.3
SMC - 6M - 2R	6	1/8	4.8	14	14	15.3	17.7	25.4	32.8
SMC - 6M - 4R	6	1/4	4.8	14	14	15.3	17.7	30.5	37.9
SMC - 6M - 6R	6	3/8	4.8	18	14	15.3	17.7	31.0	38.4
SMC - 6M - 8R	6	1/2	4.8	22	14	15.3	17.7	37.3	44.7
SMC - 8M - 2R	8	1/8	4.8	15	16	16.2	18.6	26.7	34.2
SMC - 8M - 4R	8	1/4	6.4	15	16	16.2	18.6	31.2	38.7
SMC - 8M - 6R	8	3/8	6.4	18	16	16.2	18.6	31.8	39.3
SMC - 8M - 8R	8	1/2	6.4	22	16	16.2	18.6	38.1	45.6
SMC - 10M - 2R	10	1/8	4.8	18	19	17.2	19.5	28.7	36.3
SMC - 10M - 4R	10	1/4	7.9	18	19	17.2	19.5	33.3	40.9
SMC - 10M - 6R	10	3/8	7.9	18	19	17.2	19.5	33.3	40.9
SMC - 10M - 8R	10	1/2	7.9	22	19	17.2	19.5	38.9	46.5
SMC - 12M - 4R	12	1/4	7.1	22	22	22.8	22.0	33.3	43.4
SMC - 12M - 6R	12	3/8	9.5	22	22	22.8	22.0	33.3	43.4
SMC - 12M - 8R	12	1/2	9.5	22	22	22.8	22.0	38.9	49.0
SMC - 12M - 12R	12	3/4	9.5	27	22	22.8	22.0	40.4	50.5
SMC - 15M - 8R	15	1/2	11.9	24	25	24.4	22.0	38.9	49.0
SMC - 16M - 4R	16	1/4	7.1	24	25	24.4	22.0	34.0	44.1
SMC - 16M - 6R	16	3/8	9.5	24	25	24.4	22.0	34.0	44.1
SMC - 16M - 8R	16	1/2	11.9	24	25	24.4	22.0	38.9	49.0
SMC - 16M - 12R	16	3/4	12.7	27	25	24.4	22.0	40.4	50.5
SMC - 18M - 8R	18	1/2	11.9	27	30	24.4	22.0	40.4	50.5
SMC - 18M - 12R	18	3/4	15.1	27	30	24.4	22.0	40.4	50.5
SMC - 20M - 8R	20	1/2	11.9	30	32	26.0	22.0	42.2	52.3
SMC - 20M - 12R	20	3/4	15.9	30	32	26.0	22.0	42.2	52.3
SMC - 22M - 12R	22	3/4	15.9	30	32	26.0	22.0	42.2	52.3
SMC - 22M - 16R	22	1	18.3	35	32	26.0	22.0	47.0	57.1
SMC - 25M - 12R	25	3/4	15.9	35	38	31.3	26.5	45.2	57.5
SMC - 25M - 16R	25	1	21.8	35	38	31.3	26.5	50.0	62.3
SMC - 28M - 16R	28	1	21.8	41	46	36.6	36.6	51.6	72.4
SMC - 28M - 20R	28	1-1/4	21.8	44.4	46	36.6	36.6	52.3	73.1
SMC - 30M - 20R	30	1-1/4	26.2	46	50	39.6	39.2	55.6	77.2
SMC - 32M - 20R	32	1-1/4	28.6	46	50	42.0	41.6	56.6	79.6
SMC - 38M - 24R	38	1-1/2	33.7	55	60	49.4	47.9	64.0	91.6

- Dimensions and Drawings are for reference only and are subject to change without prior notice.  
 - Unless otherwise specified, all dimensions are in millimeters.  
 - Sizes, pressure classes, and end connections not listed are available upon request.  
 - Dimensions shown with SUPERLOK nuts finger-tight, where applicable.