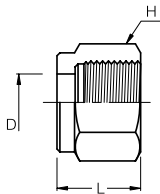


### SN

#### Nut



#### Fractional

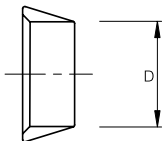
Part No.	Tube OD D (inch)	Width Across Flat H (inch)	L	Part No.	Tube OD D (inch)	Width Across Flat H (inch)	L
SN - 1	1/16	5/16	7.90	SN - 8	1/2	7/8	17.30
SN - 2	1/8	7/16	11.93	SN - 10	5/8	1	17.52
SN - 3	3/16	1/2	11.93	SN - 12	3/4	1-1/8	17.52
SN - 4	1/4	9/16	12.70	SN - 14	7/8	1-1/4	17.52
SN - 5	5/16	5/8	13.50	SN - 16	1	1-1/2	20.60
SN - 6	3/8	11/16	14.22				

#### Metric

Part No.	Tube OD D	Width Across Flat H	L	Part No.	Tube OD D	Width Across Flat H	L
SN - 2M	2	12	11.90	SN - 14M	14	25	17.50
SN - 3M	3	12	11.90	SN - 15M	15	25	17.50
SN - 4M	4	12	11.90	SN - 16M	16	25	17.50
SN - 6M	6	14	12.70	SN - 18M	18	30	17.50
SN - 8M	8	16	13.50	SN - 20M	20	32	17.50
SN - 10M	10	19	15.10	SN - 22M	22	32	17.50
SN - 12M	12	22	17.50	SN - 25M	25	38	20.60

### SFF

#### Front Ferrule



#### Fractional

Part No.	Tube OD D (inch)	Part No.	Tube OD D (inch)
SFF - 1	1/16	SFF - 8	1/2
SFF - 2	1/8	SFF - 10	5/8
SFF - 3	3/16	SFF - 12	3/4
SFF - 4	1/4	SFF - 14	7/8
SFF - 5	5/16	SFF - 16	1
SFF - 6	3/8		

#### Metric

Part No.	Tube OD D	Part No.	Tube OD D
SFF - 2M	2	SFF - 14M	14
SFF - 3M	3	SFF - 15M	15
SFF - 4M	4	SFF - 16M	16
SFF - 6M	6	SFF - 18M	18
SFF - 8M	8	SFF - 20M	20
SFF - 10M	10	SFF - 22M	22
SFF - 12M	12	SFF - 25M	25

- Dimensions and Drawings are for reference only and are subject to change without prior notice.
- Unless otherwise specified, all dimensions are in millimeters.
- Sizes, pressure classes, and end connections not listed are available upon request.
- Dimensions shown with SUPERLOK nuts finger-tight, where applicable.