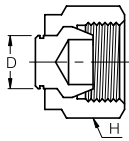


SP
Plug



Plug provides plugging fitting port

Installation instruction

1. With wrench, 1/4 turn from finger-tight position.
(1/8 turn for 1/8", 3/16", 2, 3, 4 size plug)
2. Remove nut and ferrules from body

Fractional

Part No.	Tube OD D (inch)	Width Across Flat H (inch)	Part No.	Tube OD D (inch)	Width Across Flat H (inch)
SP - 2	1/8	7/16	SP - 8	1/2	7/8
SP - 3	3/16	1/2	SP - 10	5/8	1
SP - 4	1/4	9/16	SP - 12	3/4	1-1/8
SP - 5	5/16	5/8	SP - 14	7/8	1-1/4
SP - 6	3/8	11/16	SP - 16	1	1-1/2

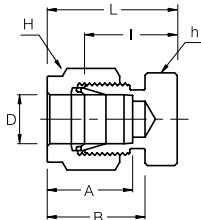
Plugs Unused port of Metric SUPERLOK fittings

Metric

Part No.	Tube OD D (inch)	Width Across Flat H	Part No.	Tube OD D (inch)	Width Across Flat H
SP - 2M	2	12	SP - 15M	15	25
SP - 3M	3	12	SP - 16M	16	25
SP - 4M	4	12	SP - 18M	18	30
SP - 6M	6	14	SP - 20M	20	32
SP - 8M	8	16	SP - 22M	22	32
SP - 10M	10	19	SP - 25M	25	38
SP - 12M	12	22			

Plugs Unused port of Fractional SUPERLOK fittings

SC
Cap



Installation instruction

1. With wrench, 1-1/4 turn from finger-tight position.
(3/4 turn for 1/8", 3/16", 3mm, 4mm)
2. Insert tube end into cap

Connects Caps End of Fractional Tubes

Part No.	Tube OD D (inch)	Width Across Flat		A	B	I	L
		h (inch)	H (inch)				
SC - 1	1/16	5/16	5/16	8.63	10.92	11.20	14.98
SC - 2	1/8	7/16	7/16	12.70	15.24	13.46	20.06
SC - 3	3/16	7/16	1/2	13.71	16.00	14.73	21.33
SC - 4	1/4	1/2	9/16	15.24	17.78	16.00	23.36
SC - 5	5/16	9/16	5/8	16.25	18.54	17.01	24.38
SC - 6	3/8	5/8	11/16	16.76	19.30	18.28	25.65
SC - 8	1/2	13/16	7/8	22.86	21.84	19.05	29.21
SC - 10	5/8	15/16	1	24.38	21.84	19.81	29.97
SC - 12	3/4	1-1/16	1-1/8	24.38	21.84	23.33	33.49
SC - 14	7/8	1-3/16	1-1/4	25.90	21.84	23.87	34.03
SC - 16	1	1-3/8	1/1/2	31.24	26.41	26.16	38.35

Connects Metric Tubes

Part No.	Tube O.D. D	Width Across Flat		A	B	I	L	Part No.	Tube O.D. D	Width Across Flat		A	B	I	L
		h	H							h	H				
SC - 2M	2	12	12	12.9	15.3	13.5	20.1	SC - 15M	15	24	25	24.4	22.0	19.8	29.9
SC - 3M	3	12	12	12.9	15.3	13.5	20.1	SC - 16M	16	24	25	24.4	22.0	19.8	29.9
SC - 4M	4	12	12	13.7	16.1	14.7	21.3	SC - 18M	18	27	30	24.4	22.0	21.3	31.4
SC - 6M	6	14	14	15.3	17.7	15.7	23.1	SC - 20M	20	30	32	26.0	22.0	23.9	34.0
SC - 8M	8	15	16	16.2	18.6	17.0	24.5	SC - 22M	22	30	32	26.0	22.0	23.9	34.0
SC - 10M	10	18	19	17.2	19.5	19.0	26.6	SC - 25M	25	35	38	31.3	26.5	26.2	38.5
SC - 12M	12	22	22	22.8	22.0	19.0	29.1								

- Dimensions and Drawings are for reference only and are subject to change without prior notice.
- Unless otherwise specified, all dimensions are in millimeters.
- Sizes, pressure classes, and end connections not listed are available upon request.
- Dimensions shown with SUPERLOK nuts finger-tight, where applicable.