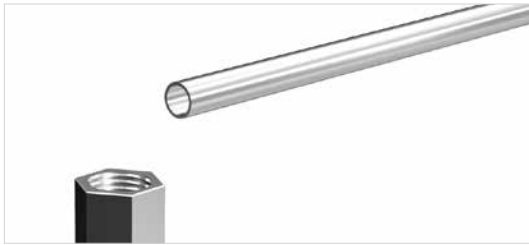


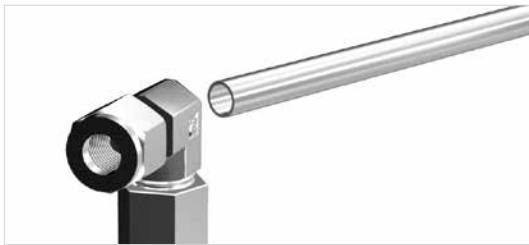
To Solve Adapter Alignment Problems



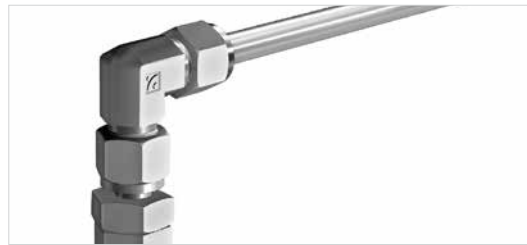
1. Required installation is to connect tubing in direction shown, to a female port.



3. To connect this situation, merely tighten pipe thread of male adapter into female port.



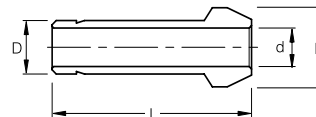
2. With pipe connection tight, the male elbow is pointing in the wrong direction for desired tubing run.



4. Connect union elbow to adapter by tightening SUPERLOK connection with wrench while holding elbow pointing in desired direction. Then insert tubing into the other end of the Union Elbow and connect tubing.

SPC

Port Connector



Connects Fractional SUPERLOK® Ports

Part No.	Tube OD D (inch)	d (Min)	E	L
SPC - 2	1/8	2.1	6.09	22.35
SPC - 4	1/4	4.4	9.39	25.30
SPC - 5	5/16	5.6	10.92	25.90
SPC - 6	3/8	6.9	12.70	26.70
SPC - 8	1/2	9.4	15.74	35.81
SPC - 12	3/4	14.8	22.09	38.10
SPC - 16	1	20.4	28.44	48.00

Connects Metric SUPERLOK® Ports

Part No.	Tube OD D (inch)	d (Min)	E	L
SPC - 3M	3	1.9	6.0	22.2
SPC - 6M	6	4.1	9.0	24.6
SPC - 8M	8	5.6	11.0	28.5
SPC - 10M	10	7.1	13.1	26.1
SPC - 12M	12	8.8	15.0	35.8
SPC - 16M	16	12.0	19.0	37.4

- Dimensions and Drawings are for reference only and are subject to change without prior notice.
- Unless otherwise specified, all dimensions are in millimeters.
- Sizes, pressure classes, and end connections not listed are available upon request.
- Dimensions shown with SUPERLOK nuts finger-tight, where applicable.