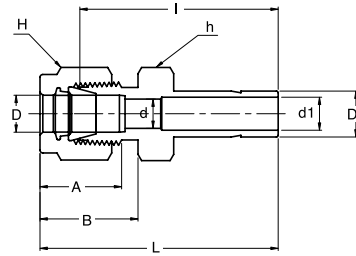


SR
Reducer

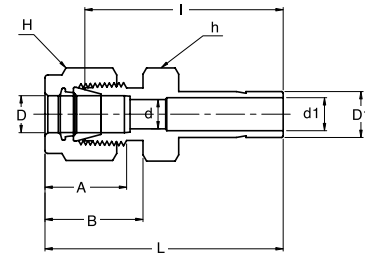


Connects Fractional Tubes To Fractional SUPERLOK® Port

Part No.	Tube OD		d Min	d1 Min	Width Across Flat		A	B	I	L
	D (inch)	D1 (inch)			h (inch)	H (inch)				
SR - 2 - 1	1/8	1/16	2.28	0.8	7/16	7/16	12.70	15.24	22.35	28.95
SR - 2 - 2	1/8	1/8	2.28	2.1	7/16	7/16	12.70	15.24	26.92	33.52
SR - 2 - 3	1/8	3/16	2.28	3.0	7/16	7/16	12.70	15.24	27.68	34.29
SR - 2 - 4	1/8	1/4	2.28	4.4	7/16	7/16	12.70	15.24	29.46	36.06
SR - 2 - 6	1/8	3/8	2.28	6.9	7/16	7/16	12.70	15.24	30.98	37.59
SR - 2 - 8	1/8	1/2	2.28	9.4	9/16	7/16	12.70	15.24	37.59	44.19
SR - 3 - 2	3/16	1/8	3.04	2.03	7/16	1/2	13.71	16.00	28.19	34.79
SR - 3 - 4	3/16	1/4	3.04	4.4	7/16	1/2	13.71	16.00	30.48	37.08
SR - 4 - 2	1/4	1/8	4.83	2.1	1/2	9/16	15.24	17.78	29.46	36.83
SR - 4 - 3	1/4	3/16	4.83	3.0	1/2	9/16	15.24	17.78	30.22	37.59
SR - 4 - 4	1/4	1/4	4.83	4.4	1/2	9/16	15.24	17.78	31.75	39.11
SR - 4 - 5	1/4	5/16	4.83	5.6	1/2	9/16	15.24	17.78	32.51	39.87
SR - 4 - 6	1/4	3/8	4.83	6.9	1/2	9/16	15.24	17.78	33.27	40.64
SR - 4 - 8	1/4	1/2	4.83	9.4	9/16	9/16	15.24	17.78	38.86	46.22
SR - 4 - 10	1/4	5/8	4.83	12.0	11/16	9/16	15.24	17.78	40.64	48.00
SR - 4 - 12	1/4	3/4	4.83	14.8	13/16	9/16	15.24	17.78	41.40	47.75
SR - 5 - 6	5/16	3/8	6.35	6.9	9/16	5/8	16.25	18.54	34.54	41.91
SR - 5 - 8	5/16	1/2	6.35	9.4	9/16	5/8	16.25	18.54	40.13	47.49
SR - 6 - 4	3/8	1/4	7.11	4.4	5/8	11/16	16.76	19.30	34.03	41.40
SR - 6 - 6	3/8	3/8	7.11	6.9	5/8	11/16	16.76	19.30	35.81	43.18
SR - 6 - 8	3/8	1/2	7.11	9.4	5/8	11/16	16.76	19.30	41.14	48.51
SR - 6 - 10	3/8	5/8	7.11	12.0	11/16	11/16	16.76	19.30	42.92	50.29
SR - 6 - 12	3/8	3/4	7.11	14.8	13/16	11/16	16.76	19.30	42.92	50.29
SR - 8 - 4	1/2	1/4	10.41	4.4	13/16	7/8	22.86	21.84	34.79	44.95
SR - 8 - 6	1/2	3/8	10.41	6.9	13/16	7/8	22.86	21.84	36.57	46.73
SR - 8 - 8	1/2	1/2	10.41	9.4	13/16	7/8	22.86	21.84	42.16	52.32
SR - 8 - 10	1/2	5/8	10.41	12.0	13/16	7/8	22.86	21.84	43.68	53.84
SR - 8 - 12	1/2	3/4	10.41	14.8	13/16	7/8	22.86	21.84	43.68	53.84
SR - 8 - 16	1/2	1	10.41	20.4	1-1/16	7/8	22.86	21.84	50.03	60.19
SR - 10 - 12	5/8	3/4	12.70	14.8	15/16	1	24.38	21.84	44.45	54.61
SR - 10 - 14	5/8	7/8	12.70	17.0	15/16	1	24.38	21.84	45.97	56.13
SR - 10 - 16	5/8	1	12.70	20.4	1-1/16	1	24.38	21.84	50.80	60.96
SR - 12 - 8	3/4	1/2	15.74	9.4	1-1/16	1-1/8	24.38	21.84	44.45	54.61
SR - 12 - 16	3/4	1	15.74	20.4	1-1/16	1-1/8	24.38	21.84	52.32	62.48

- Dimensions and Drawings are for reference only and are subject to change without prior notice.
 - Unless otherwise specified, all dimensions are in millimeters.
 - Sizes, pressure classes, and end connections not listed are available upon request.
 - Dimensions shown with SUPERLOK nuts finger-tight, where applicable.

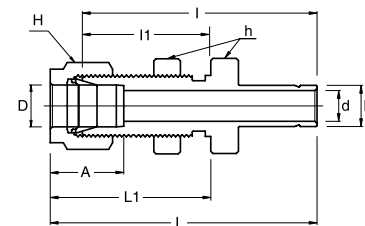
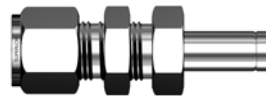
SR
Reducer



Connects Metric Tubes To Fractional **SUPERLOK®** Port

Part No.	Tube OD		d Min	d1 Min	Width Across Flat		A	B	I	L
	D	D1 (inch)			h	H				
SR - 3M - 2	3	1/8	2.4	2.1	12	12	12.9	15.3	26.9	33.5
SR - 3M - 4	3	1/4	2.4	4.4	12	12	12.9	15.3	29.5	36.1
SR - 6M - 4	6	1/4	4.8	4.4	14	14	15.3	17.7	31.8	39.2
SR - 6M - 5	6	5/16	4.8	5.6	14	14	15.3	17.7	32.5	39.9
SR - 6M - 6	6	3/8	4.8	6.9	14	14	15.3	17.7	33.3	40.7
SR - 6M - 8	6	1/2	4.8	9.4	14	14	15.3	17.7	38.9	46.3
SR - 8M - 6	8	3/8	6.4	6.9	15	16	16.2	18.6	34.5	42.0
SR - 8M - 8	8	1/2	6.4	9.4	15	16	16.2	18.6	40.1	47.6
SR - 10M - 6	10	3/8	7.9	6.9	18	19	17.2	19.5	36.6	44.2
SR - 10M - 8	10	1/2	7.9	9.4	18	19	17.2	19.5	42.2	49.8
SR - 12M - 8	12	1/2	9.5	9.4	22	22	22.8	22.0	42.2	52.3
SR - 12M - 12	12	3/4	9.5	14.8	22	22	22.8	22.0	43.7	53.8
SR - 18M - 12	18	3/4	15.1	14.8	27	30	24.4	22.0	46.0	56.1
SR - 18M - 16	18	1	15.1	20.4	27	30	24.4	22.0	52.3	62.4

SRB
Bulkhead Reducer



Connects Fractional Tubes To Fractional **SUPERLOK®** Port

Part No.	Tube O.D. D (inch)	d Min	Width Across Flat		A	I	I1	L	L1	Panel Hole Drill Size	Panel Max. Thickness
			h (inch)	H (inch)							
SRB - 2 - 2	1/8	2.1	1/2	7/16	12.70	42.92	24.63	49.53	31.24	8.33	12.70
SRB - 4 - 4	1/4	4.4	5/8	9/16	15.24	48.51	26.16	55.88	33.52	11.50	10.16
SRB - 6 - 6	3/8	6.9	3/4	11/16	16.76	53.84	29.46	61.21	36.83	14.68	11.17
SRB - 8 - 8	1/2	9.4	15/16	7/8	22.86	62.73	31.75	72.89	41.91	19.44	12.70
SRB - 10 - 10	5/8	12.0	1-1/16	1	24.38	65.02	32.51	75.18	42.67	22.62	12.70
SRB - 16 - 16	1	20.4	1-5/8	1-1/2	31.24	88.13	45.21	100.33	57.40	33.73	19.05

- Dimensions and Drawings are for reference only and are subject to change without prior notice.
- Unless otherwise specified, all dimensions are in millimeters.
- Sizes, pressure classes, and end connections not listed are available upon request.
- Dimensions shown with SUPERLOK nuts finger-tight, where applicable.