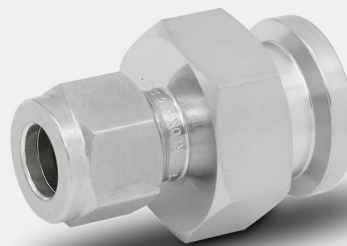
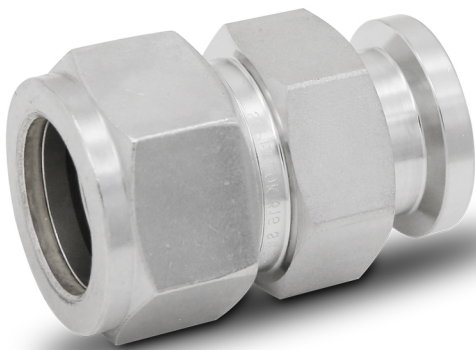


---

# Sanitary Flange Adapters

• SSFA Series



# Sanitary Flange Adapters

## SSFA Series



### Features

- 316 stainless steel material standard; optional materials include alloy 400, Brass and alloy C-276.
- Wrench flats for ease of tube fitting assembly.
- Gaugeability on initial installation using Superlok gap inspection gauges.
- One-piece integrally machined body.
- Available with Superlok tube fitting and connections up to 50 mm and 2 in,.

## Ordering Information

Example: **SSFA -  $\frac{8}{1}$  -  $\frac{8}{2}$  SA -  $\frac{B}{4}$**

### 1. Tube O.D

|            |     |      |      |      |      |       |       |      |
|------------|-----|------|------|------|------|-------|-------|------|
| Tube O.D   | 1/4 | 3/8  | 1/2  | 3/4  | 1    | 1-1/4 | 1-1/2 | 2    |
| Designator | 4   | 6    | 8    | 12   | 16   | 20    | 24    | 32   |
| Tube O.D   | 8mm | 12mm | 16mm | 20mm | 25mm | 32mm  | 38mm  | 50mm |
| Designator | 4   | 6    | 8    | 12   | 16   | 20    | 38M   | 50M  |

### 2. Flange Type

SA = Sanitary Flange Type

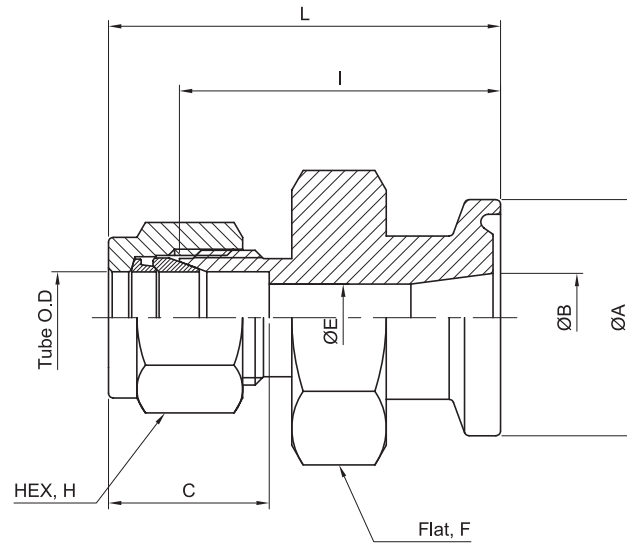
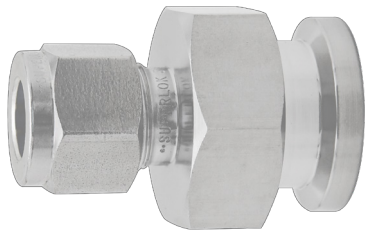
### 3. Flange Size

|             |     |     |   |       |       |    |
|-------------|-----|-----|---|-------|-------|----|
| Flange Size | 1/2 | 3/4 | 1 | 1-1/4 | 1-1/2 | 2  |
| Designator  | 4   | 6   | 8 | 12    | 16    | 20 |

### 4. Body Material

- (Blank) = 316 Stainless Steel
- B = BRASS
- M40 = Monel, Alloy 400
- 276 = Hastelloy, Alloy C-276

## SUPERLOK Sanitary Flange Adapters Information



| Part No.     | Tube O.D.<br>D, inch | Sanitary<br>Flange Size | Dimensions, mm |         |      |       |      |       |      |      |
|--------------|----------------------|-------------------------|----------------|---------|------|-------|------|-------|------|------|
|              |                      |                         | Hex, H         | Flat, F | A    | B     | C    | E     | I    | L    |
| SSFA-4-8SA   | 1/4                  | 1/2                     | 14.3           | 27.0    | 25.0 | 9.4   | 15.5 | 4.8   | 32.4 | 39.9 |
| SSFA-4-12SA  | 1/4                  | 3/4                     | 14.3           | 27.0    | 25.0 | 15.75 | 15.5 | 4.8   | 32.5 | 40.0 |
| SSFA-4-16SA  | 1/4                  | 1                       | 14.3           | 34.9    | 50.4 | 22.1  | 15.5 | 4.8   | 32.5 | 40.0 |
| SSFA-4-24SA  | 1/4                  | 1-1/2                   | 14.3           | 34.9    | 50.4 | 34.8  | 15.5 | 4.8   | 32.5 | 40.0 |
| SSFA-6-8SA   | 3/8                  | 1/2                     | 17.5           | 27.0    | 25.0 | 9.4   | 17.0 | 7.1   | 34.0 | 41.5 |
| SSFA-6-12SA  | 3/8                  | 3/4                     | 17.5           | 27.0    | 25.0 | 15.75 | 17.0 | 7.1   | 34.0 | 41.5 |
| SSFA-6-16SA  | 3/8                  | 1                       | 17.5           | 34.9    | 50.4 | 22.1  | 17.0 | 7.1   | 34.0 | 41.5 |
| SSFA-6-24SA  | 3/8                  | 1-1/2                   | 17.5           | 34.9    | 50.4 | 34.8  | 17.0 | 7.1   | 34.0 | 41.5 |
| SSFA-8-8SA   | 1/2                  | 1/2                     | 22.2           | 27.0    | 25.0 | 9.4   | 22.9 | 10.4  | 34.0 | 44.2 |
| SSFA-8-12SA  | 1/2                  | 3/4                     | 22.2           | 27.0    | 25.0 | 15.75 | 22.9 | 10.4  | 34.0 | 44.2 |
| SSFA-8-16SA  | 1/2                  | 1                       | 22.2           | 34.9    | 50.4 | 22.1  | 22.9 | 10.4  | 34.0 | 44.2 |
| SSFA-8-24SA  | 1/2                  | 1-1/2                   | 22.2           | 34.9    | 50.4 | 34.8  | 22.9 | 10.4  | 34.0 | 44.2 |
| SSFA-12-12SA | 3/4                  | 3/4                     | 28.6           | 27.0    | 25.0 | 15.75 | 24.6 | 15.75 | 34.0 | 44.4 |
| SSFA-12-16SA | 3/4                  | 1                       | 28.6           | 34.9    | 50.4 | 22.1  | 24.6 | 15.75 | 33.8 | 44.2 |
| SSFA-16-16SA | 1                    | 3/4                     | 38.1           | 34.9    | 50.4 | 22.35 | 31.4 | 22.35 | 36.4 | 48.8 |
| SSFA-16-24SA | 1                    | 1-1/2                   | 38.1           | 34.9    | 50.4 | 34.8  | 31.4 | 22.35 | 36.4 | 48.8 |

## NOTE:

Dimensions and Drawings are for reference only and are subject to change without prior notice.